

DANIEL LEVI
PORTFOLIO

Joy Gryson, RTW Spring 22, Design & Development

JOY GRYSON	PATTERN #: JGR22D02	PATTERN MAKER: AZUSA	FABRIC: COTTON SATIN
	SEASON: SPRING 22	SIZE: 4	FABRIC WIDTH: 55"



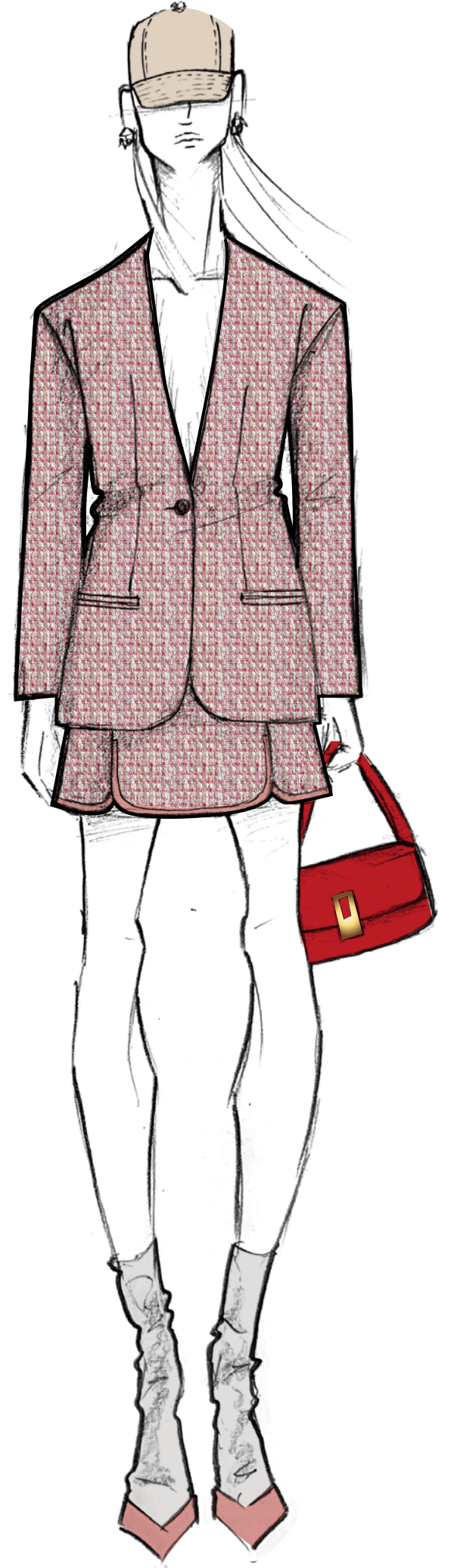
PATTERN SPECS

1	Follow reference photo for all proportions
2	Self material is more stiff so drape outcome would be slight different.
3	Neck opening should reach 1/2" before bra line
4	Front placket should be shaped as V at top
5	One piece collar, soft
6	Cuff hight 2.5"
7	sleeve placket 4"
8	Tie construction details on next page.

SEWING INSTRUCTIONS

1	Unlined
2	French seam construction
3	edge tpsts w regular thread @ both sides of front placket, collar, cuff, and sleeve placket
5	1/4" be

Created by Daniel: (917) 941-5802, Levidaniee@gmail.com. *Ple



K.ngsley, Collection I, Design & Development



Rosie Assoulin, Dress Development, Fall 19



UNDER SHIRT
8" FOLDED HORSE HAIR - PUSH SHIRT UP

CREATE TULLE WINGS
FRAME IN ORGANZA



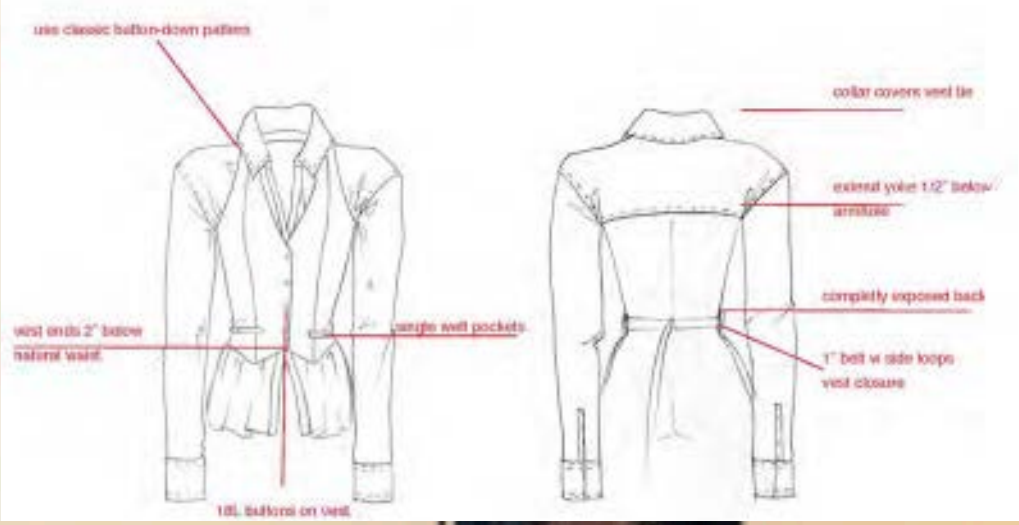
Rosie Assoulin, Design, Fall 21



ROSIE ASSOULIN

Patternmaker: Rebecca
Style #: T05
Size: 4

Season: PF/ Fall 21
Fabric: Poplin+Linen



ROSIE ASSOULIN

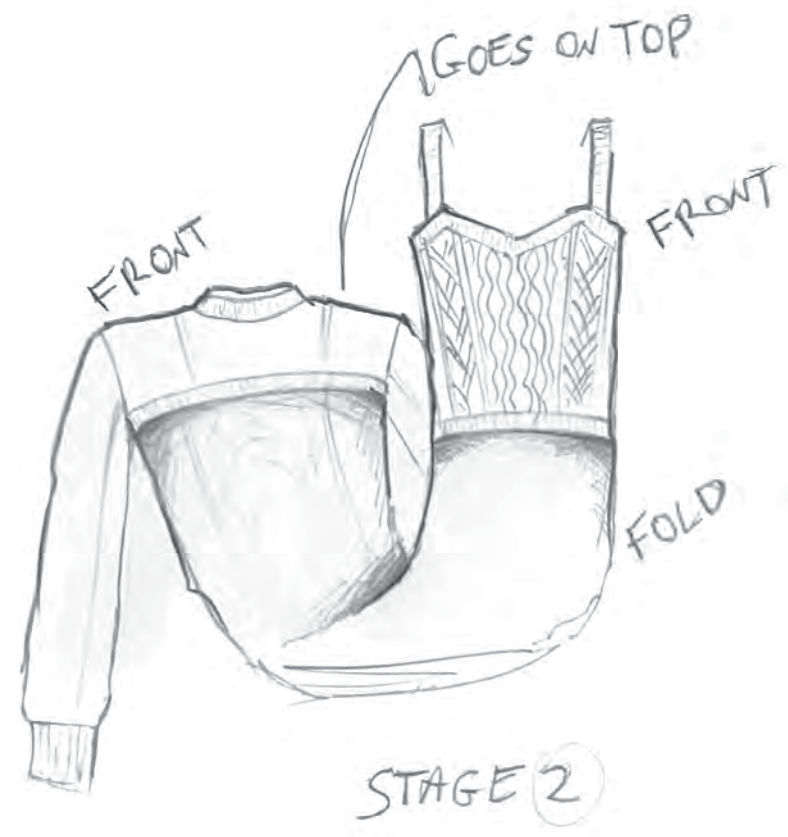
Patternmaker: Rebecca
Style #: T05
Size: 4

Season: PF/ Fall 21
Fabric: Poplin+Linen



Rosie Assoulin, Knit Development, Prefall 20

ORIGINAL DRAPE
NO FUNCTIONALITY



2ND DRAPE
INTEGRATED MODULARITY



FINAL SWEATER



Rosie Assoulin, Finishings Design, BAON Fall 20



INSERT SCARF INTO BELT

SEW SCARF TO WAISTBAND

TOPSTITCH
EDGE
1/4" DISTANCE
8 SPI
- MARA 30 COL 299



LEATHER BELT TAB W/TPST

TOPSTITCH
1/4" APART
2 ROWS



- MARA 120 COL 46

1/4" TOPSTITCH

STOP RED TPST HERE

EDGE TOPSTITCH



INSERT PIPING IN LINING
3/8" WIDTH

USE WRONG SIDE OF FABRIC AS RIGHT SIDE FOR COLLAR

TOPSTITCH
- 3/16" APART
- 8 SPI
- MARA 30 COL 1



ATTACH SCARF W/ BUTTON HOLE ON THE INSIDE



TOPSTITCH
3/16" APART
8 SPI
MARA 30 COL 1

1/16" TPST
8 SPI
MARA 30 COL 179

Rosie Assoulin, Floral Print Design, Fall 19



ORIGINAL PHOTOGRAPH



COLOR COMBO 1



COLOR COMBO 2



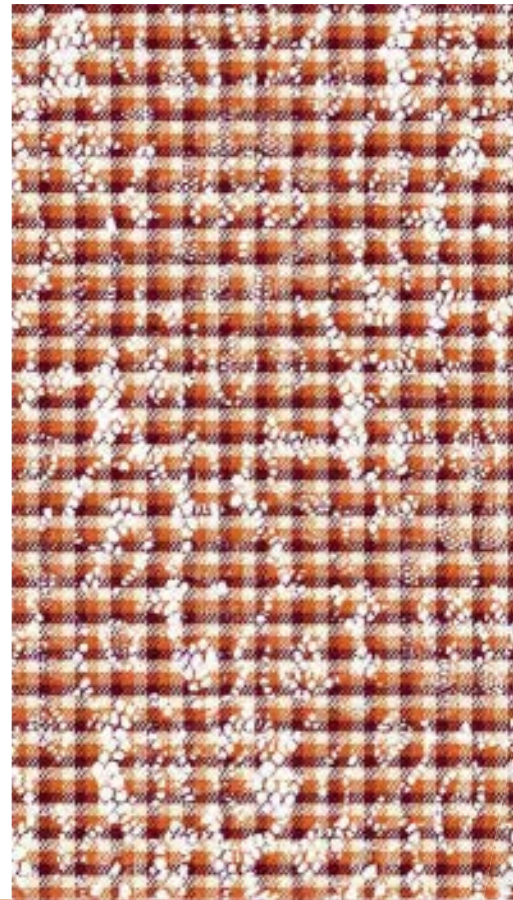
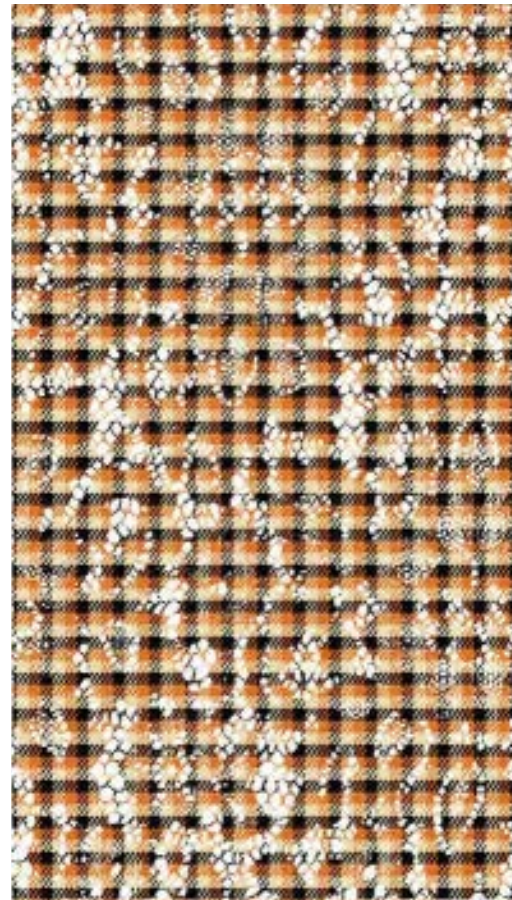
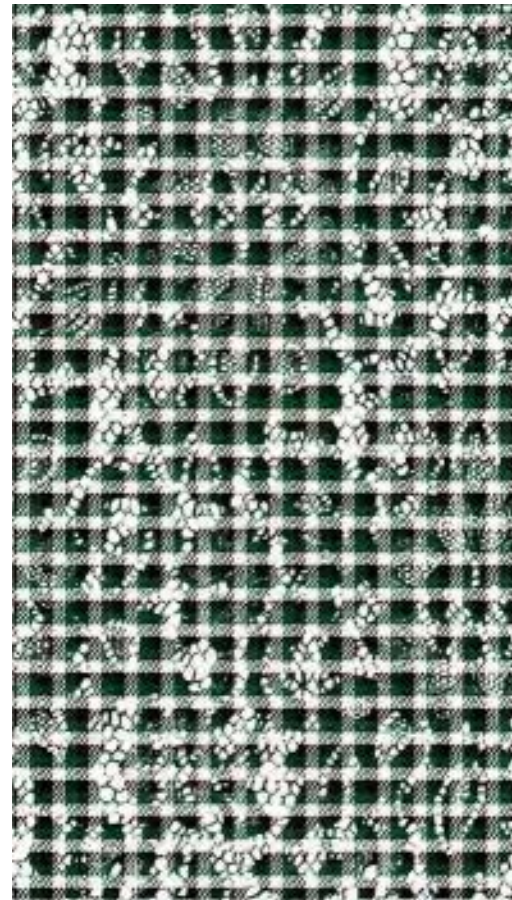
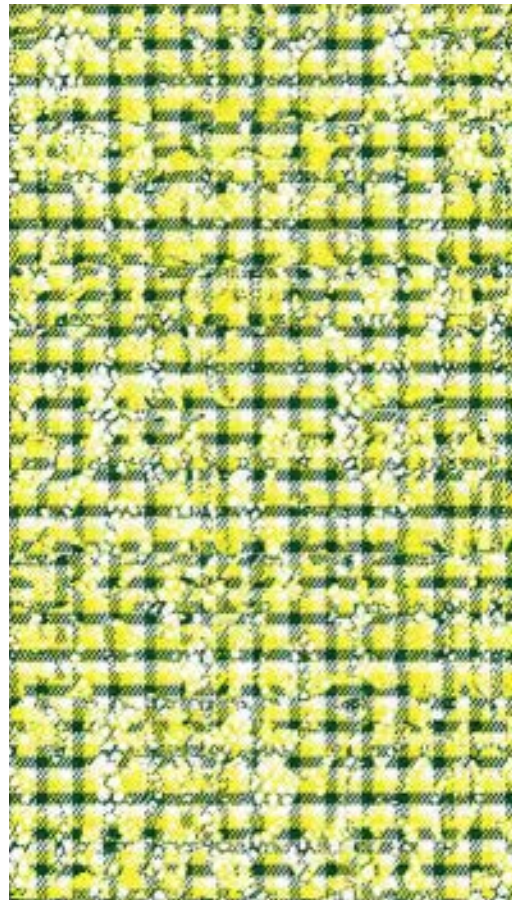
COLOR COMBO 3



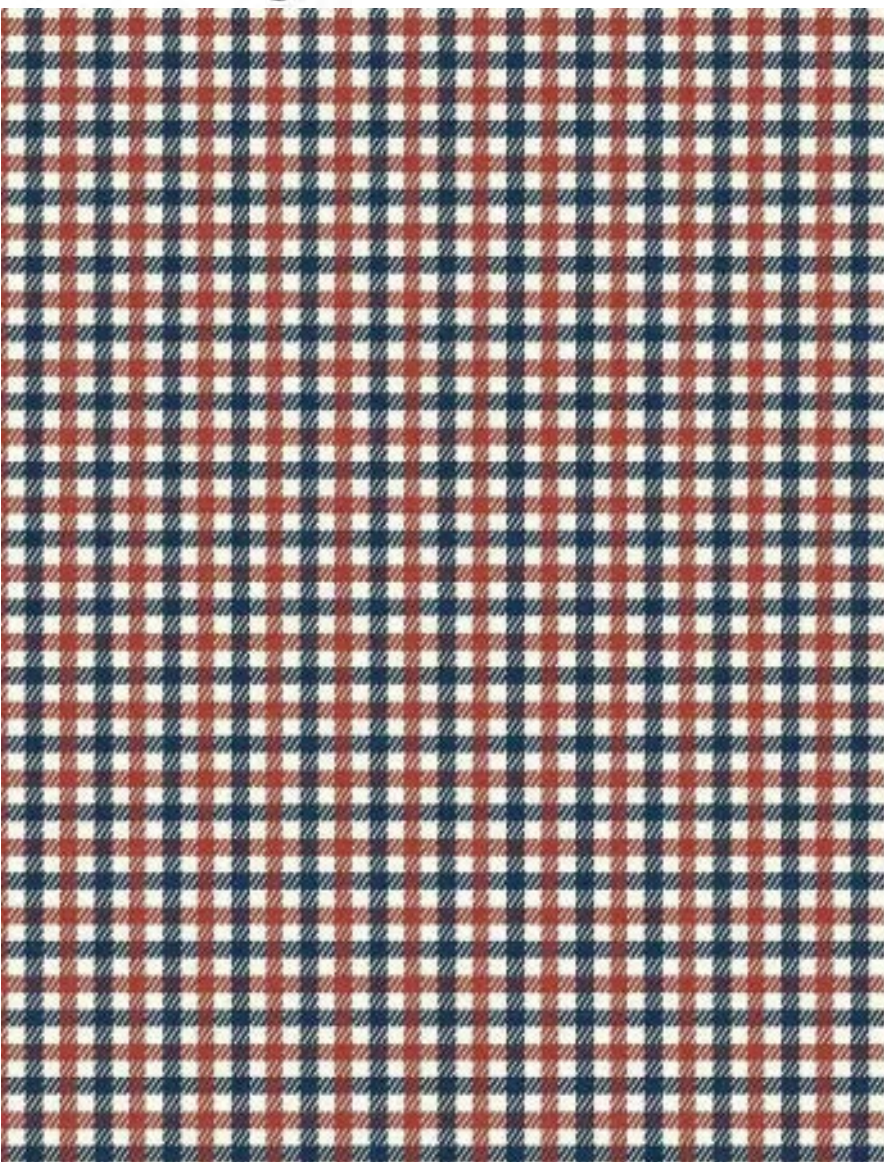
DIGITAL CHINÉ PRINT
FINAL PRINT.

Rosie Assoulin, Plaid Print Design, Fall 19

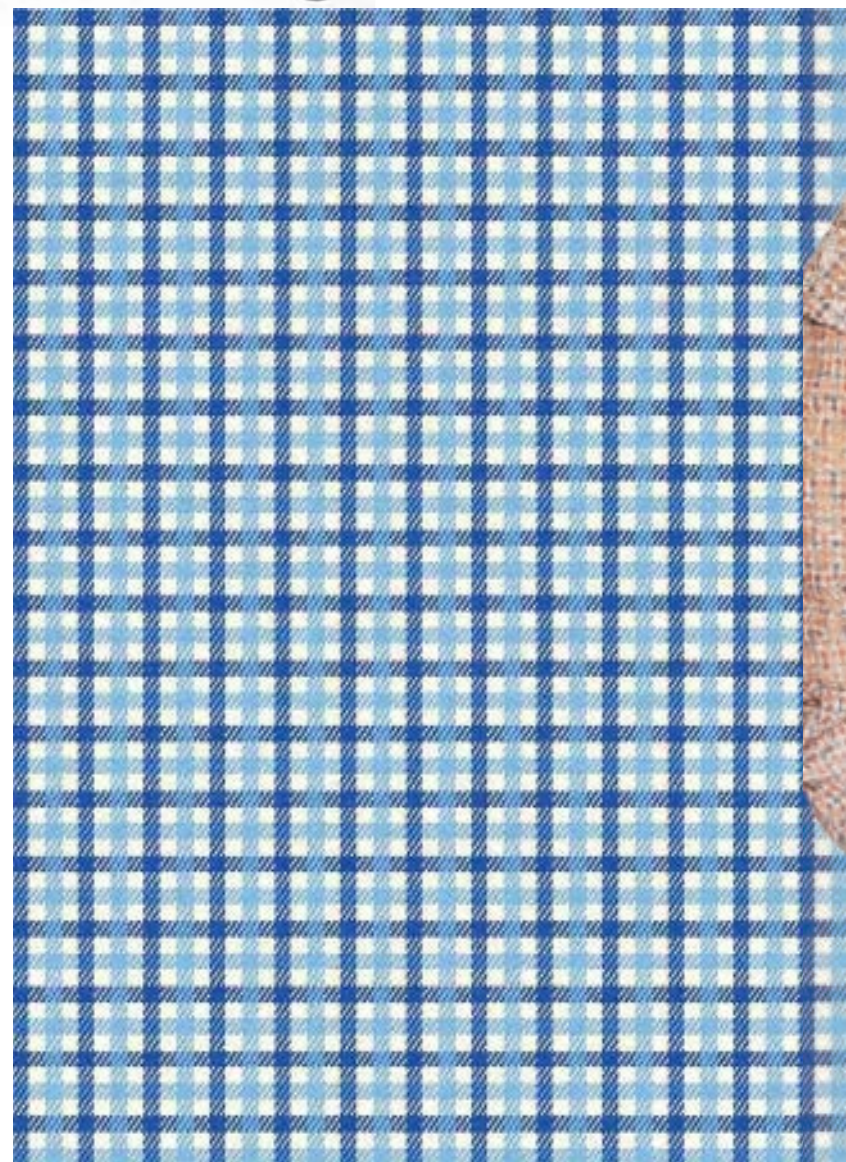
PLAID ON LACE OPTIONS



COLORWAY ①



COLORWAY ②



FINAL PRINTS



Rosie Assoulin, Textile Development, Fall 19

ORIGINAL BLANKET INSPO



CREVACUORE, ITALY

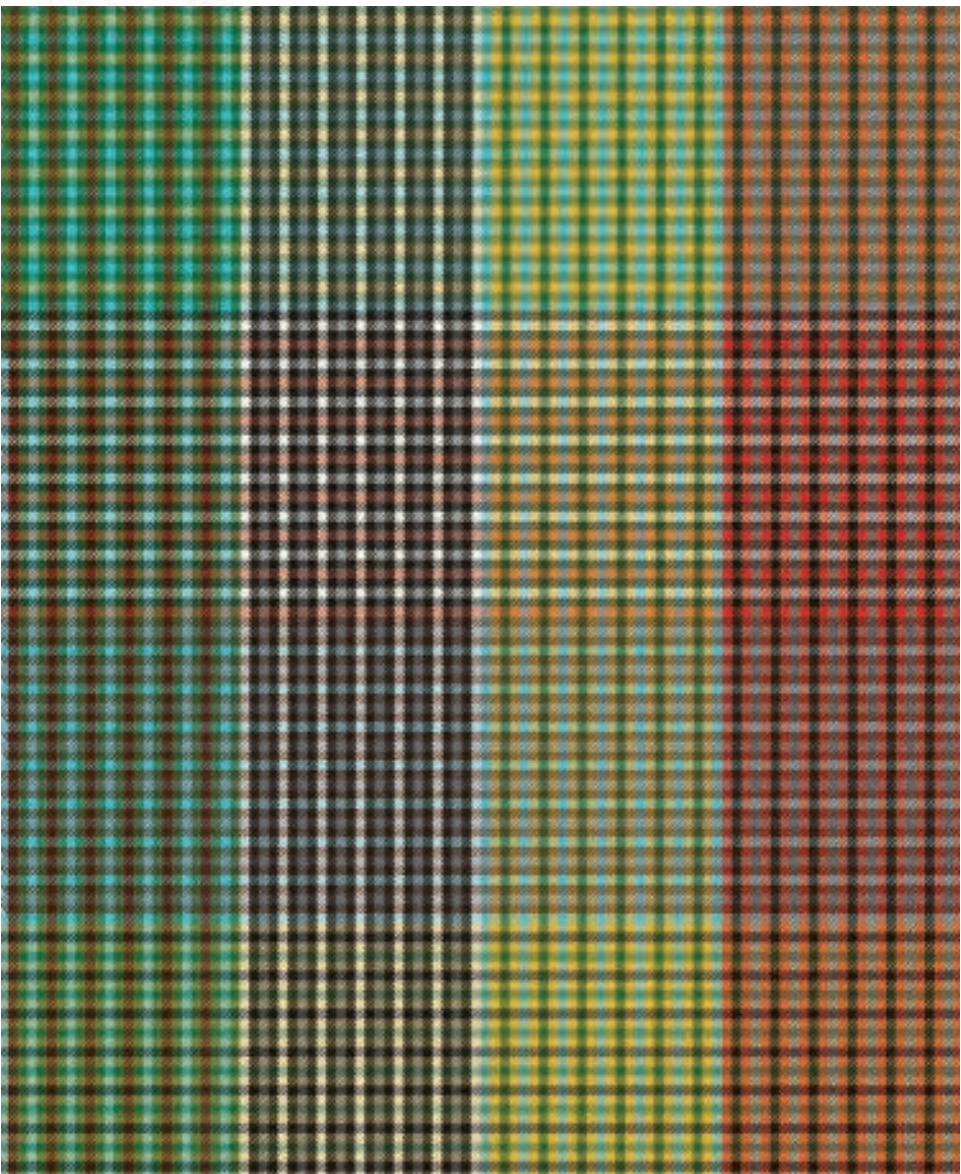
WOVEN MULTICOLOR PLAID
IN WOOL



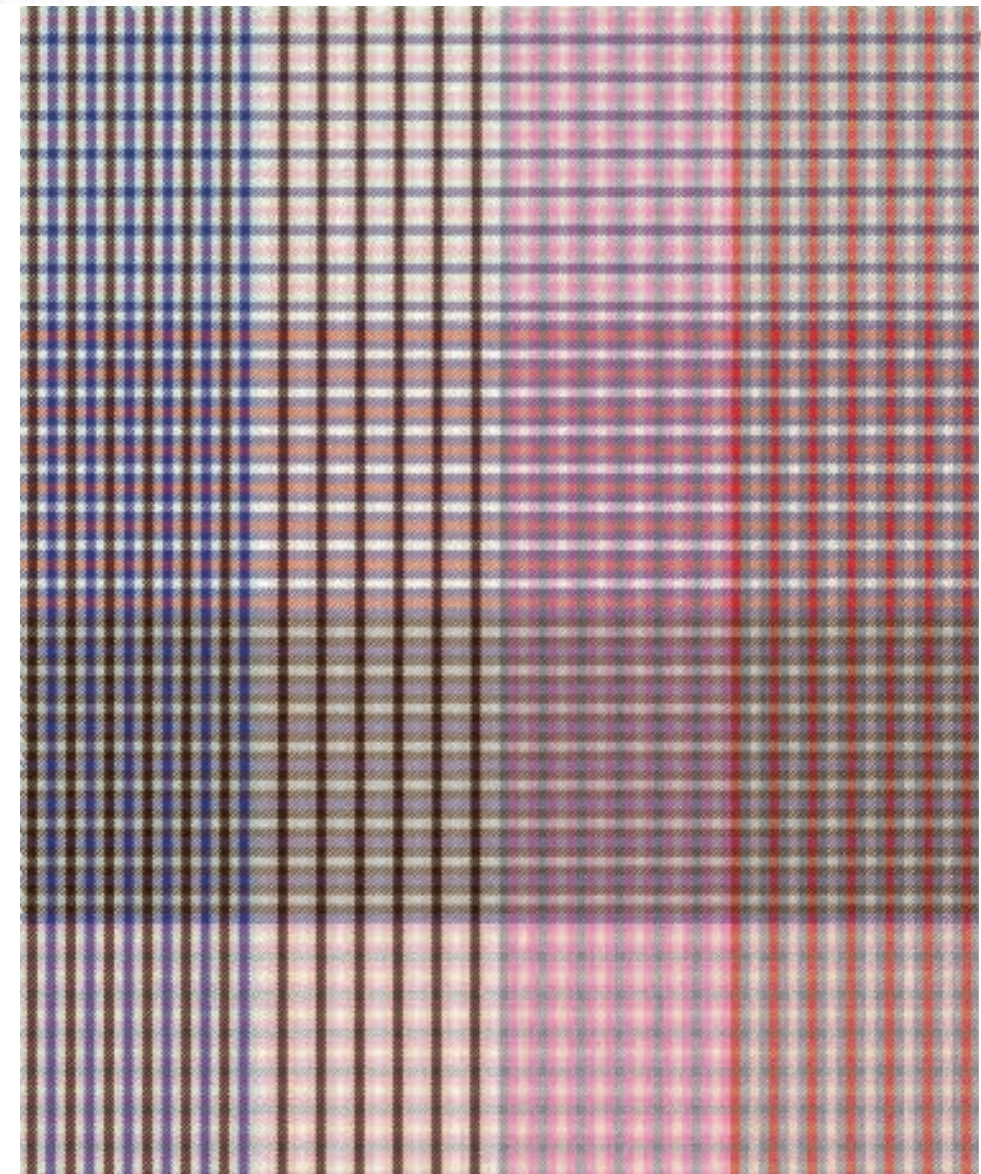
WOVEN MULTICOLOR PLAID
IN POLYESTER



OPTION (A)



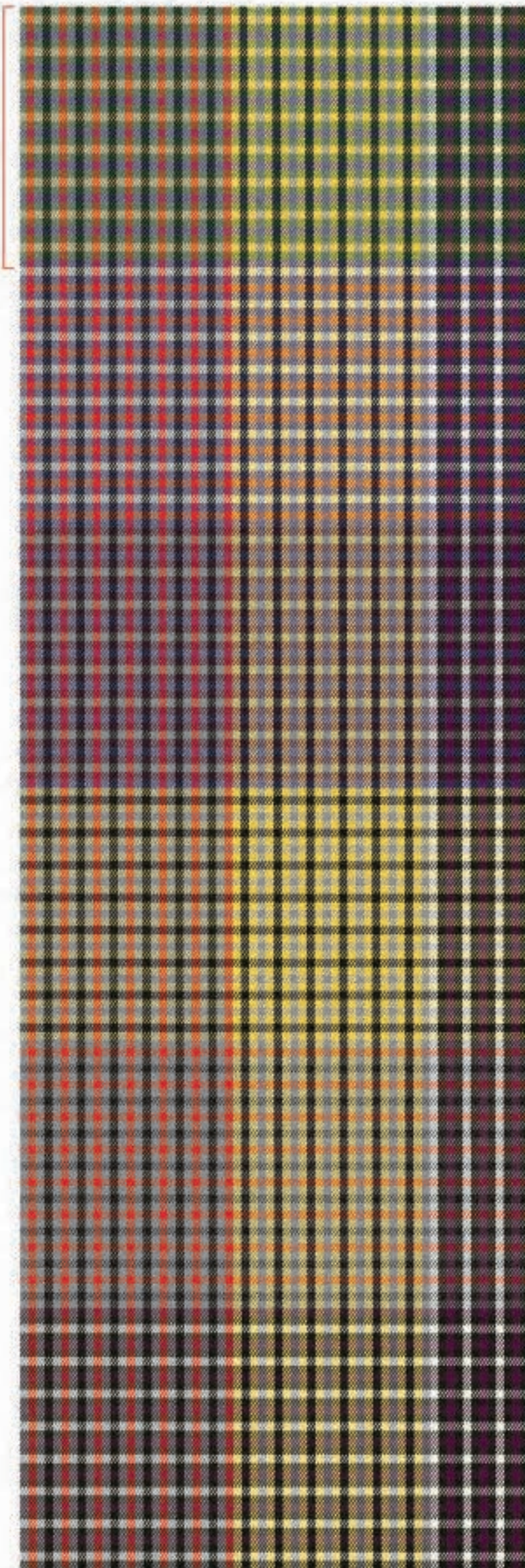
OPTION (B)



25.5"

3.25"

4.25"



- LIMITATIONS:
- 8 COLOR YARNS MAX
 - 4 COLOR COMBO REPEAT
 - NO JACQUARD. SAME COLOR GOES ALL THROUGH

Rosie Assoulin, Scarf Design, BAON Fall 20

Original Scarf, To serve as Inspiration



Stage 1: Initial Design Mock Up



Stage 2: Design Change, Motif Development



Stage 3: Design Change, Option 1



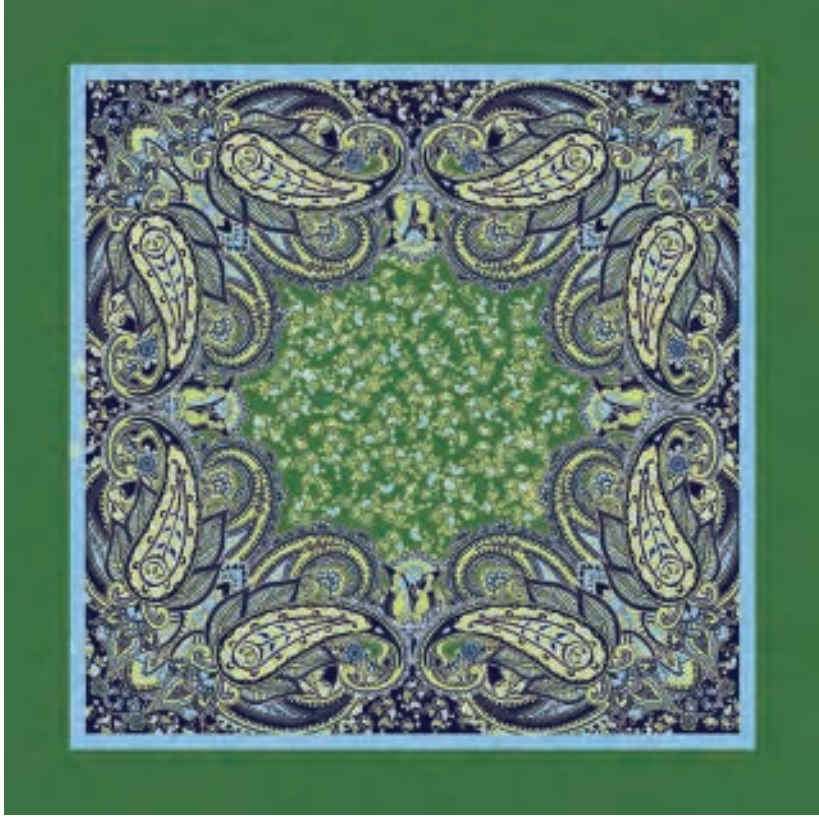
Stage 3: Design Change, Option 2



Stage 4: Color Correction, Option 1



Stage 4: Color Correction, Option 2 - Final



Rosie Assoulin, Scarf Design, BAON Fall 20

Original Scarf, To serve as Inspiration



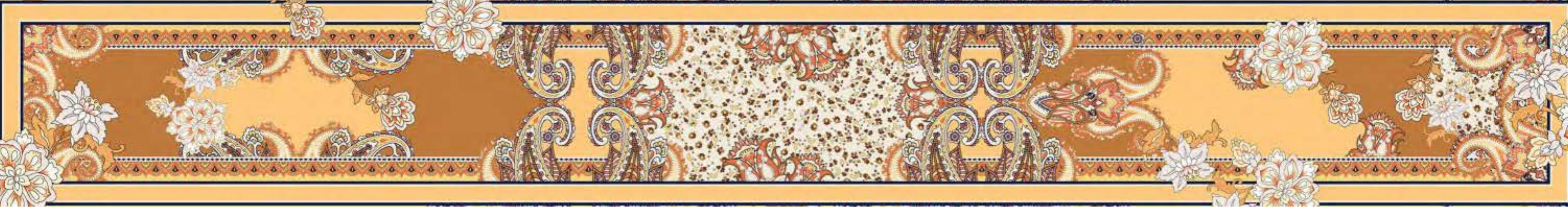
Stage 1: Second Colorway of Green Scarf, Option 1



Stage 1: Second Colorway of Green Scarf, Option 2



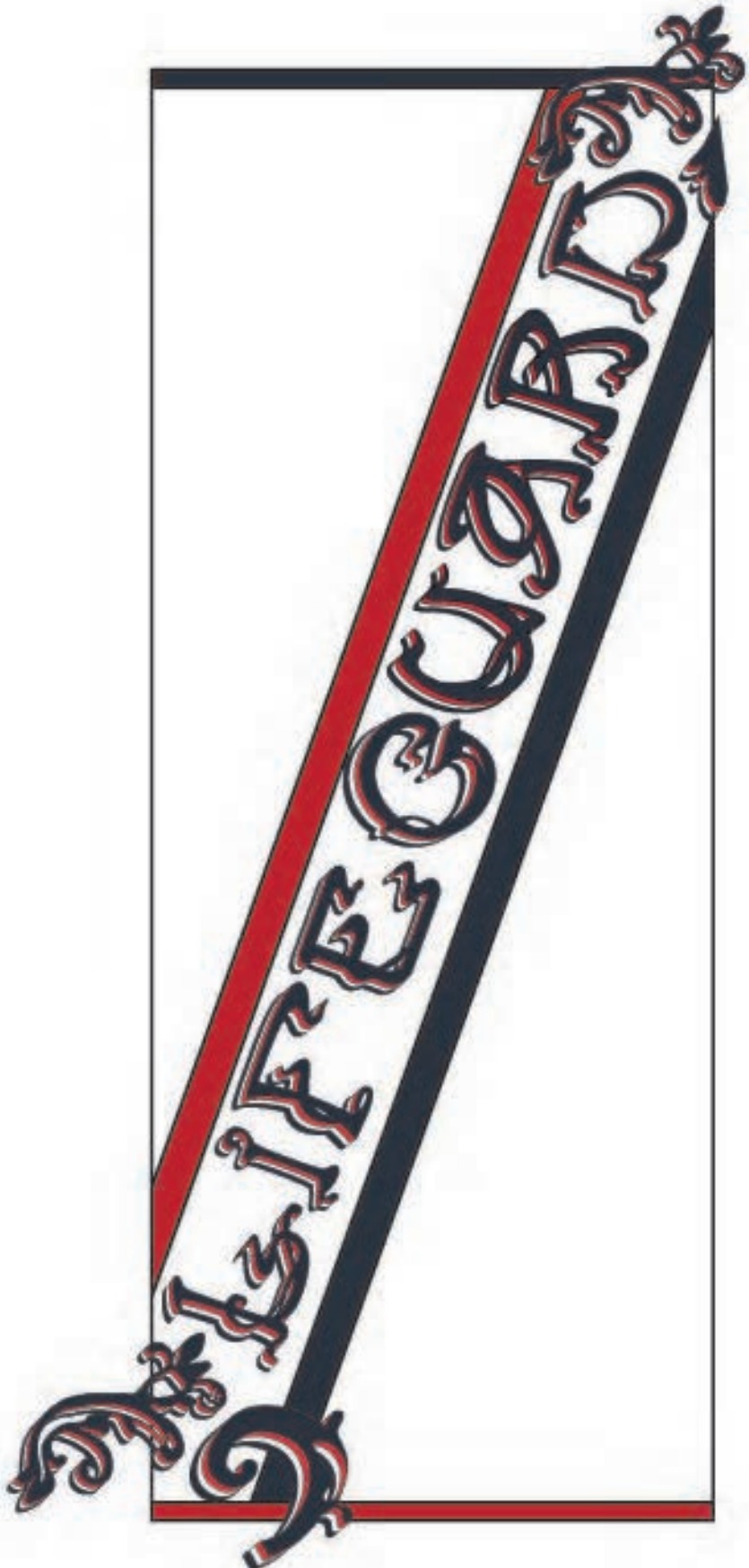
Stage 2: Advanced Design, Adding Motifs from Original, Match Size to Pattern - Final



Thom Browne, Embroidery Placement, Spring 19



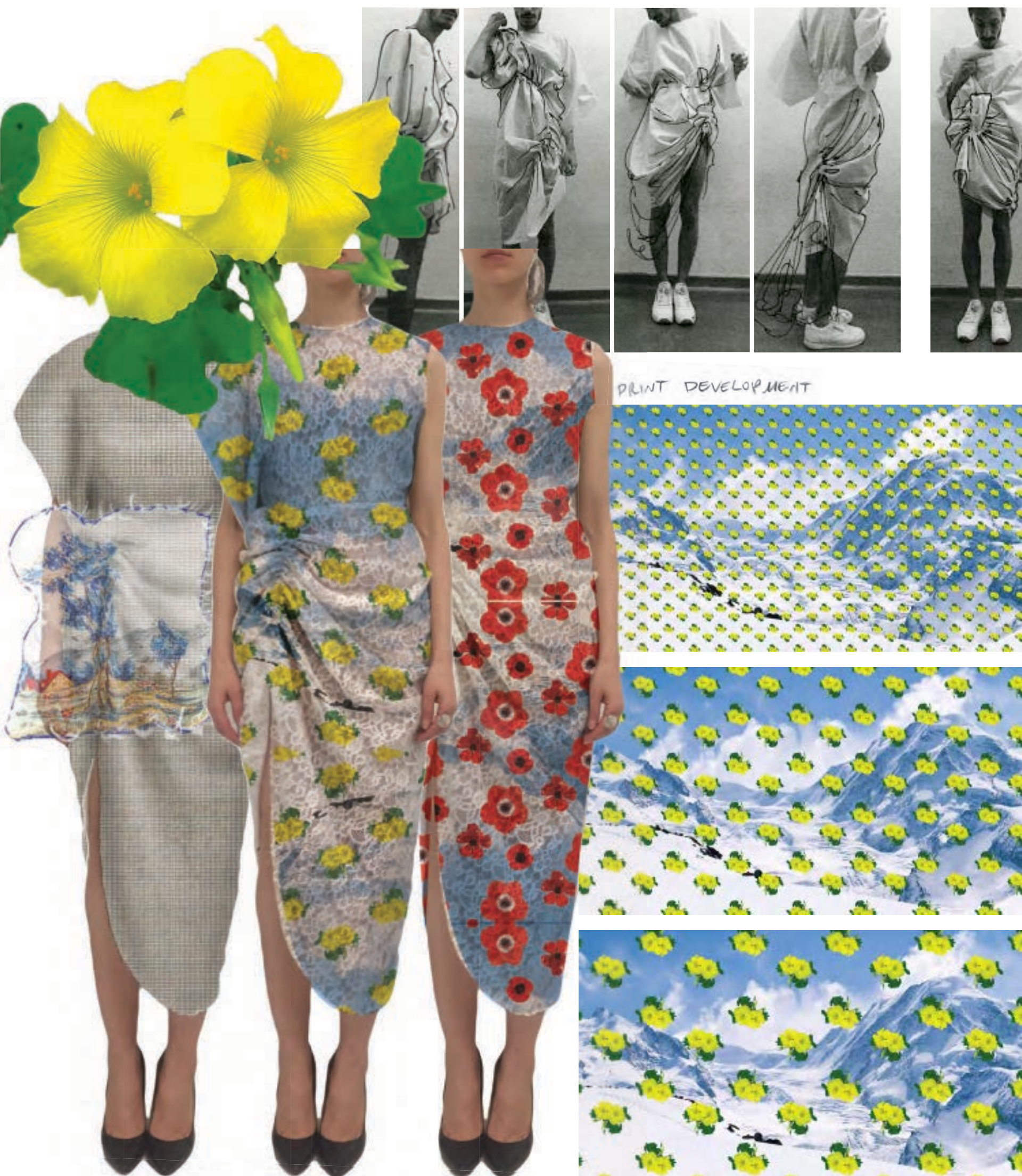
Thom Browne, Embroidery Placement, Spring 19



GRAPHICS DEVELOPMENT



Personal Collection, In The Wind, Process I



FABRICATIONS OPTIONS Mockups



REVERSIBLE DRESS



PRINTED ORGAZA + LACE

Personal Collection, In The Wind, Process 2



JACKET SILLHOUETTE COLLAGE



Personal Collection, In The Wind, Process 3

Wall Formation, Franz Erhard Walther
1981



Based
top on
Cancelled jumpsuit



THE GARMENT

THE BODY



long
back,
draped
sleeve



"The best way to understand this is to perform an activation yourself."

A C T I V A T E

THE GARMENT

THE BODY

Personal Collection, In The Wind, Linesheet



Personal Collection, In The Wind, Lookbook

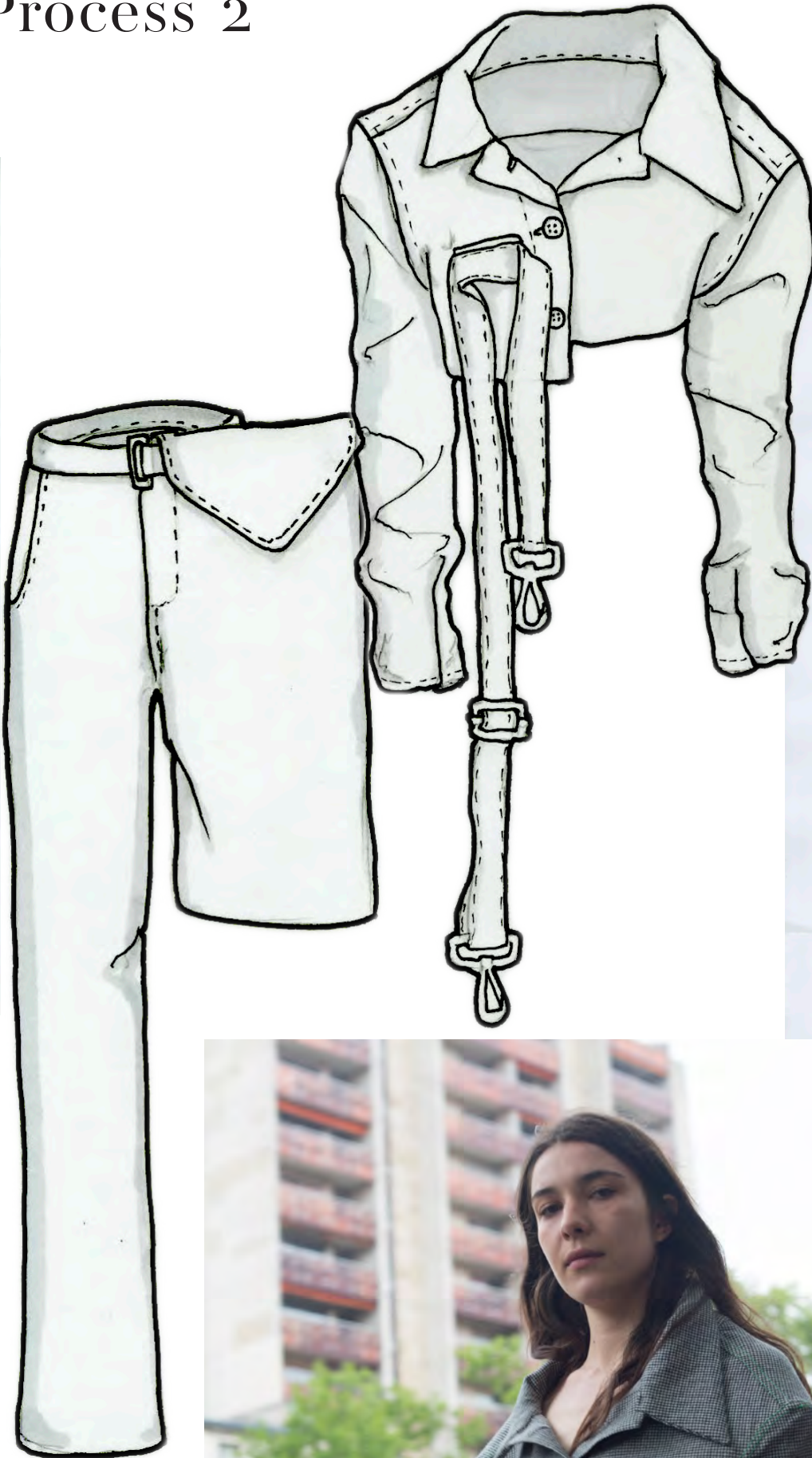
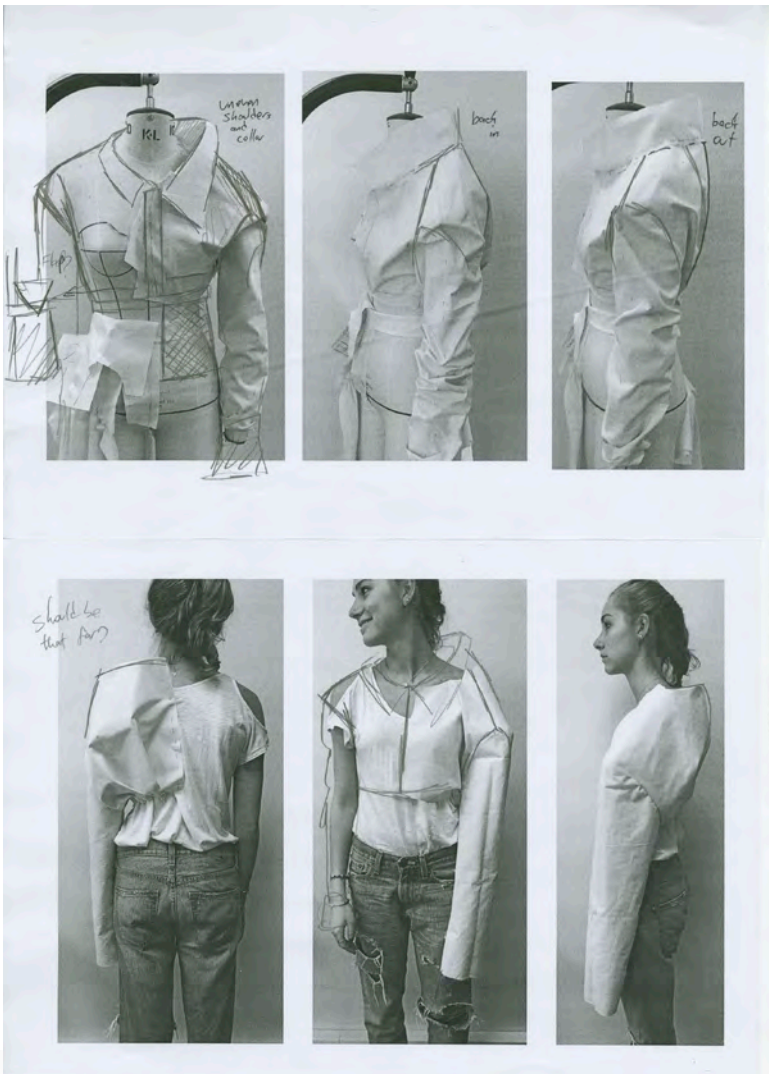


Personal Design, Collage, Styling, Design

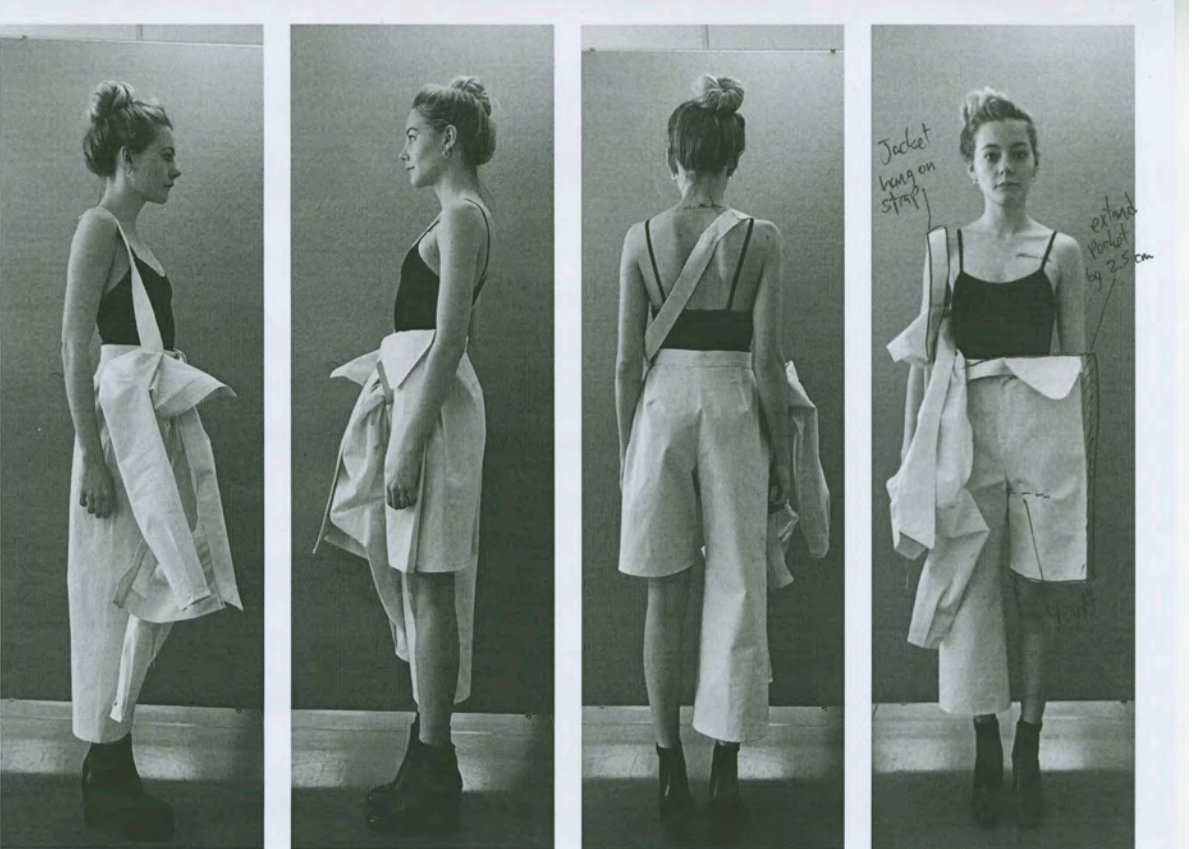


Personal Collection, Le Jeu Des Valises, Process 2

FORWARD SHOULDER SEAM

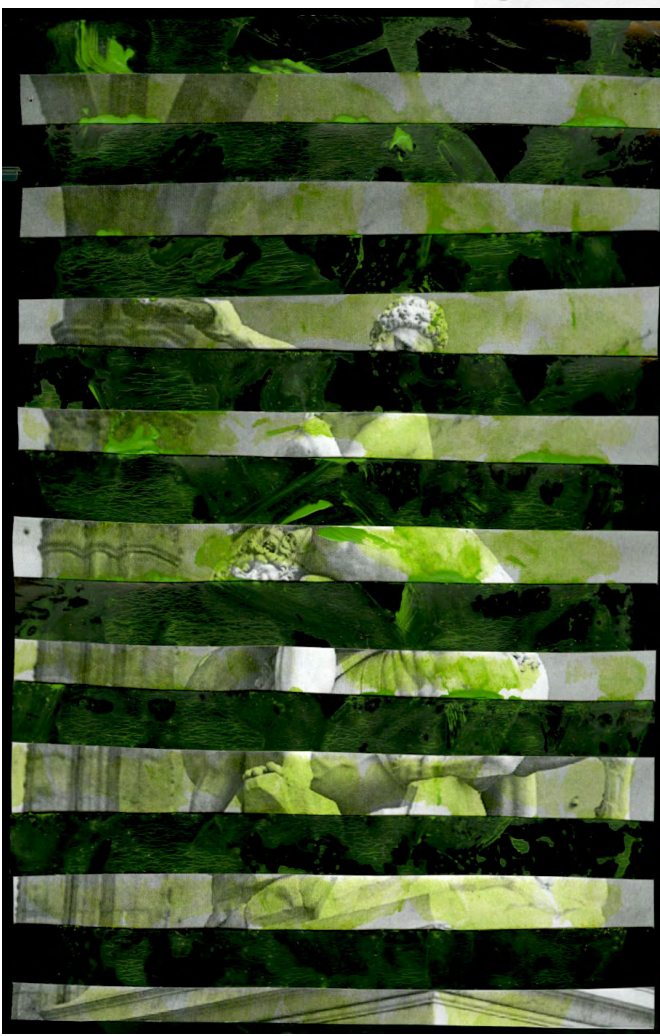


JACKET LOOK IN MULTI-WAYS



Walking down the busy streets of Paris during fall, I kept noticing the drape-shirt in peoples clothes. It never set "right". Carrying their bags, baskets, and backpacks, which pulled and gathered their clothes in unexpected ways. It was marvelous.

COLLAGE AS JACKET FABRIC



THANK YOU